

R&C PATIO DOOR (B3, B5 & B8 MODEL) MAINTENANCE GUIDE

OUTLINE: This maintenance guide is for tackling issues where the patio door is unable to lock/unlock from its set position; issues where the door isn't sliding smoothly across the rail and problems with sliding mechanisms.

THINGS TO CHECK

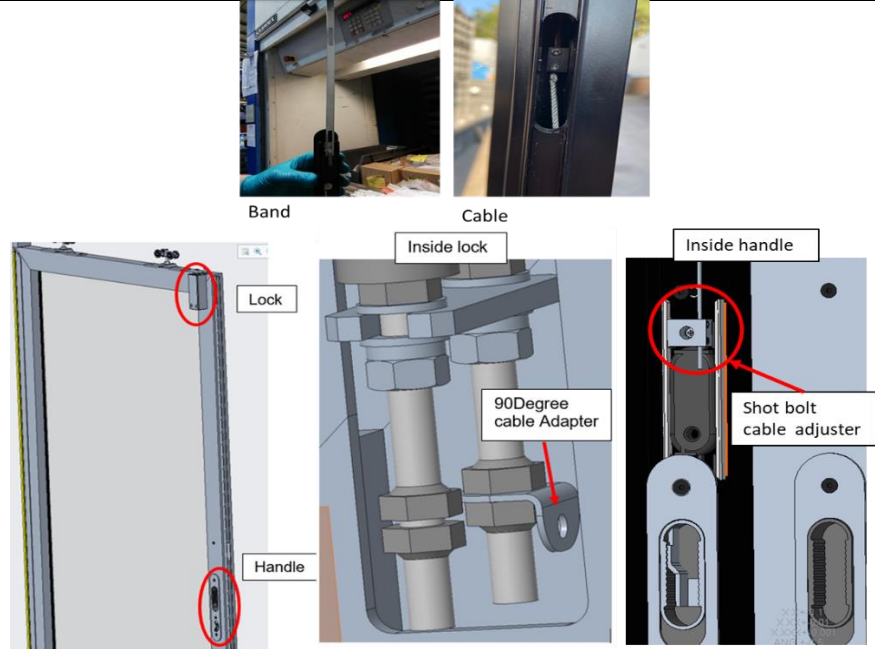
LOCKING CABLE

If the door is not locking into opened/closed position or cannot be unlocked from the locked position, then there maybe problem with cable/band.

Check if the door uses band or cable for the locking mechanisms.

- If it uses band, then check if the band is in contact with hooks located at both handle and lock.
- If it uses cable, then check if the cable is tied securely at **90-degree cable adapter** (see image) located inside the lock.
 - o Ensure that all the screws at the **shot bolt cable adjuster** (see image) are screwed tight as possible. This is located inside handle.

IMAGES/DIAGRAM



SHOT BOLT DESIGN

Ensure that there is no thread visible on the sprung bolt when pressed (as shown in the highlighted area in the image on the right, below). There is an older styler of shot bolt with threading at the highlighted location that may cause the shot bolt to be locked/ jammed when there is slight a diagonal force is applied.

- Replace the shots with latest version (same as shown in the image).

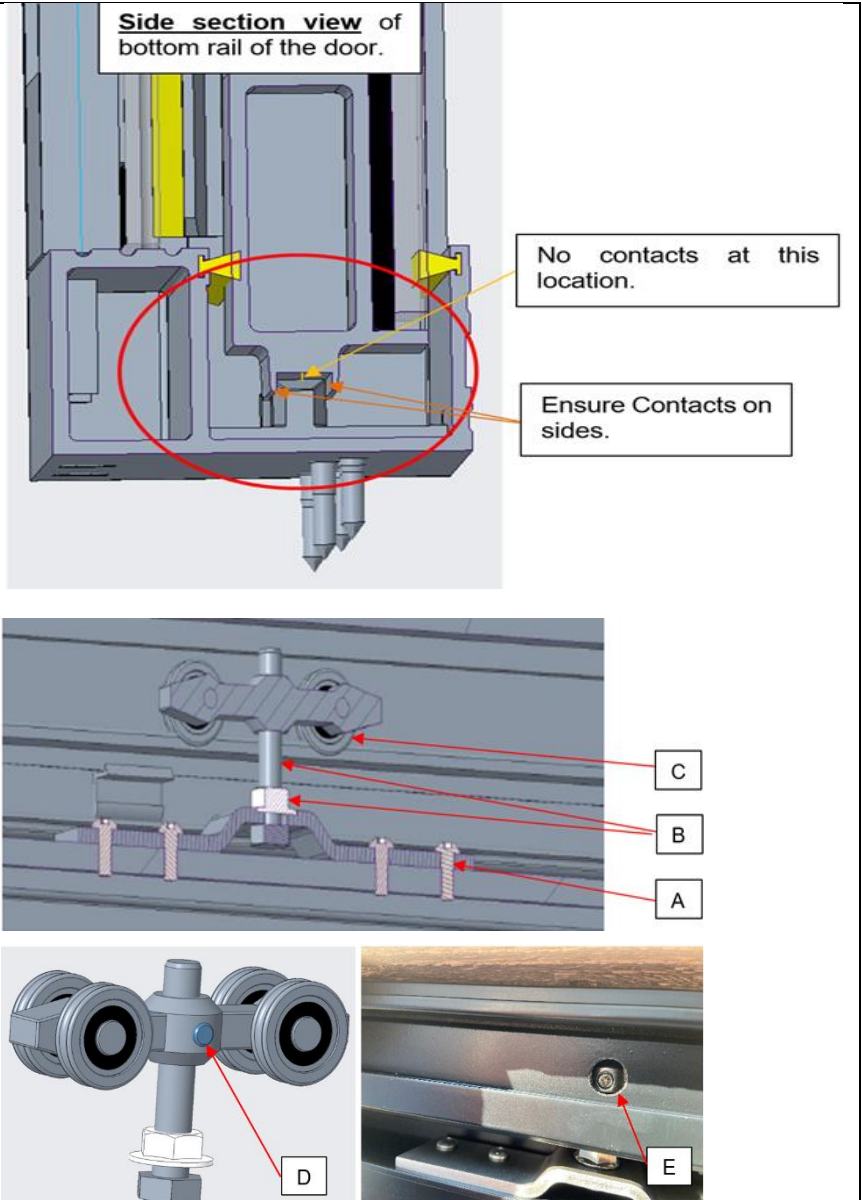


HEIGHT OF THE SLIDING DOOR

Ensure that the bottom surface of sliding door is not making any contact on the bottom rail on the door frame (See Side section view image and annotation for further clarification).

If the door is making contact to the bottom part of the frame/parts, the height needs to be adjusted using the **door carrier rollers** to ensure it's not making any contact at the bottom.

- Adjust bolts and nuts **(B)** until the bottom surface of door isn't making any contact to the bottom frame.
 - o Ensure that the grub screw **(D)** is loosened before making adjustments and tightened after the adjustments.
 - o Grub screw of the door carrier can be accessed with the valance removed through the holes available at the upper frame of the patio door from outside of patio door **(E)**.
- Ensure both wheels **(C)** of are making contact to the rail evenly.
- Ensure all the bolts **(A)** are tightened and keeping the plate parallel to the surface.

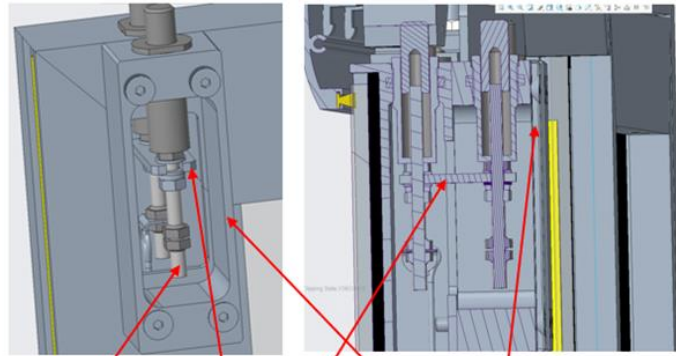


METALLIC LINK FOR CATCH BLOCK

Ensure that the high sea metallic link is sitting flat as possible, otherwise the shot bolts may jam inside the block.

If not:

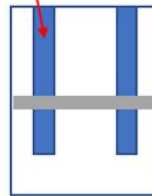
- Adjust the nuts **(X1)** so that the high seas metallic link is flat (**horizontal**) as possible.
- Check if the length of high seas metallic link fits inside the catch block when it is flat. The metallic link might not stay flat if the length is too long or exceeds the available space inside the catch block.
- If the length of metallic high seas link is too long, shorten the length by filing the excess metal off.



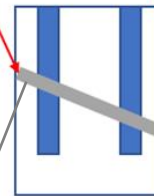
Shot bolt

High seas
metallic link

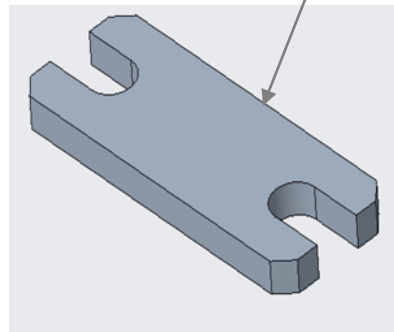
Catch block



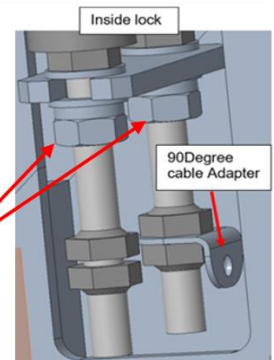
Correct length



Length too long



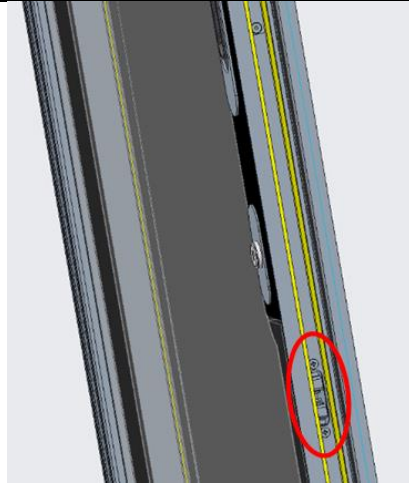
X1



TALON MATCH BOX LOCK

Check if the Match Box lock fully opens when the switch is pressed by the door latch.

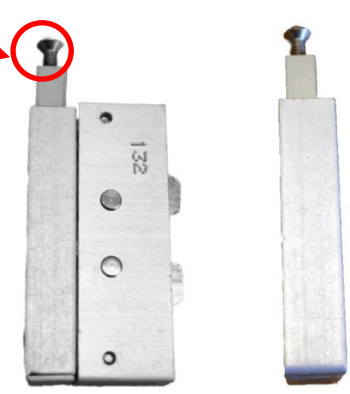
- If not, then unscrew the screw to increase the height of the switch so that it is fully pressed by the door latch's aluminium plate (please see last image for rough lock & latch orientation).



Switch



Switch screw



Aluminum plate

Door Latch

